



Education Newsletter

May 2025 - Issue 5

In This Edition

May Member Webinar

Our free monthly member webinar is coming up soon!

InspectionWorld On the Road Heads to Illinois

Join us June 21–22 at Governors State University.

IW26 Hits Valley Forge for ASHI's 50th!

Celebrate 50 years of ASHI at InspectionWorld 2026, February 15–18.

ASHI Edge

We have exciting courses on ASHI Edge for you to take and brand new approvals!

The ASHI School

Plenty of classes are coming up quick. Make sure you register soon!

Chapter Events

Two chapters are hosting their conferences in June, make sure to register soon!



May Member Webinar

ICA students—you're just one step away from becoming an ASHI member!

[Join us on May 14](#) for a helpful webinar designed to walk you through completing the required Standard of Practice (SOP) exam and activating your membership.

ASHI staff and board members will be on hand to answer your questions and guide you through the process.

All are welcome to attend—whether you're finalizing your membership or just want to learn more about ASHI benefits and how to access your account.

Let's get you across the finish line!



INSPECTION WORLD

★ ON THE ROAD ★

InspectionWorld
on the Road: Next Stop is
the Illinois Chapter,
NIC ASHI!

June 21–22 | Governors State University, University Park, IL

NIC Chapter members and anyone nearby—this one's for you! Join us for a high-impact weekend of learning, networking, and hands-on training at our next InspectionWorld On the Road event.

Open to all ASHI members, this event features multiple education tracks to match your goals:

- ☐ Early Bird Pricing: Just \$99
- ☐ Earn ASHI CE credits
- ☐ Learn from top instructors like Jon Bolton, Aaron Fuhrman & more
- ☐ State approval: WI and IN
- ☐ Pending state approvals: IL, OH, KY, TN, AR, and ICC

Spots are limited and early bird pricing won't last—**grab your seat today!**



Save the Date:
InspectionWorld 2026 Is
Coming to Valley Forge!

We're turning 50—and celebrating in a big way!

Join us for InspectionWorld 2026, taking place February 15–18 at the scenic Valley Forge Casino & Resort, just outside Philadelphia.

This milestone conference will feature:

- ☐ Expert-led educational sessions
- ☐ Networking with top industry professionals
- ☐ Pre-conference events and a lively Vendor Hall Kick-off on Feb 15
- ☐ A chance to be part of ASHI's 50th anniversary celebration!

Want to speak at IW26? We're accepting session proposals now! Share your expertise and help shape the future of the profession.

Submit Your Proposal by May 15.

Mark your calendar—this is one you won't want to miss!

NEW Interactive Course

4-Point Inspection & Wind Mitigation Class

Join us June 6 in sunny Tampa, Florida to master 4-Point and Wind Mitigation inspections in one go — and fulfill key insurance requirements.

What You'll Learn:

- 4-Point Inspection fundamentals
- Wind Mitigation techniques

- Real-world examples and documentation tips
- How to avoid common form mistakes.

[This class is approved for 5 ASHI and 5 Florida State Continuing Education Credits.](#)

New ASHI Edge State Approvals

Arkansas - New Approvals and Renewals

1. Electrical: Grounding, Bonding, and Panels
2. Exterior: Wall Coverings
3. Electrical Wiring Methods and Receptacles
4. Inspecting Wall Systems, Roofs, and Ceilings
5. And more!

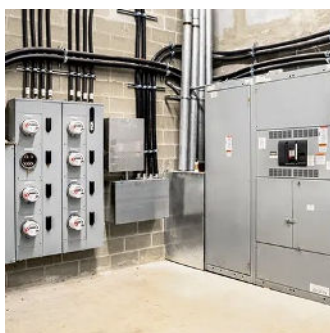
Kentucky - New Approvals and Renewals

1. [Inspecting Manufactured Homes](#)

Texas - New Course Approvals

1. [Four Point Inspections](#)

The ASHI School



Inspecting Commercial Electrical Systems

May 24, 2025 | Brentwood, TN | \$359

Gain the knowledge to safely and confidently inspect commercial electrical systems in this full-day, **in-person class**.

- ☐ Understand safety protocols, PPE, and arc-flash protection
- ☐ Learn the components of three-phase power,

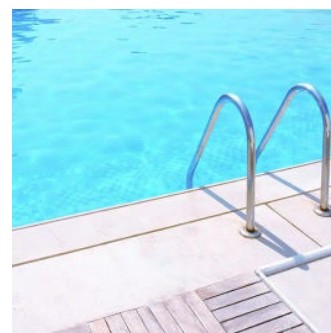


4-Point Inspection & Wind Mitigation Class

June 6, 2025 | Tampa, FL | \$329

Get the skills and certification needed for insurance-required inspections in this 5-hour **in-person class**.

- ☐ Covers roofing, electrical, HVAC & plumbing systems
- ☐ Learn how to complete the Wind Mitigation form accurately
- ☐ Required by insurance



Pool and Spa Inspection Class

June 7, 2025 | Tampa, FL | \$259

Dive into the essentials of pool and spa inspections in this 4-hour, **in-person class** designed to help you identify safety risks, understand systems, and write clear reports.

- ☐ Learn pool/spa electrical, equipment, and safety standards
- ☐ Master ASHI Pool Standards & National

transformers, and UPS systems

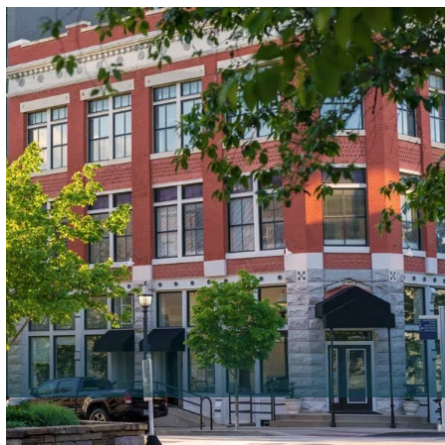
- ☐ Compare residential vs. commercial electrical systems
- ☐ Approved for 6 ASHI & TN State CE credits
- ☐ Held in Brentwood (Nashville area)

companies—including Wind Mit test

- ☐ Approved for 5 ASHI & 5 Florida CE credits
- ☐ Taught onsite in Tampa

Swimming Pool Foundation guidance

- ☐ Perfect for inspectors looking to expand services
- ☐ Approved for 4 ASHI & 4 Florida State CE credits
- ☐ Held in Tampa, FL

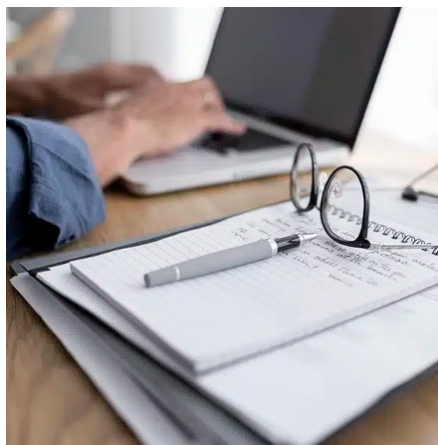


Commercial Inspection Class

June 11–13, 2025 | Live Online | \$1895

Step into a high-demand market and earn more per hour with ASHI's Commercial Inspection Class, taught by industry expert Richard Weldon.

- ☐ Earn 40–60% more than residential
- ☐ Includes textbook, checklists & proposals
- ☐ Attract repeat commercial clients
- ☐ No travel—join from anywhere



Home Inspector Exam Preparation

June 23–25, 2025 | Live Online | \$499

Prepare for your licensing exam with ASHI's 3-day virtual Exam Prep Class, designed for pre-licensing grads or experienced inspectors ready to test.

- ☐ Covers key topics like roofing, plumbing, structure & more
- ☐ Led by an experienced ASHI Certified Inspector
- ☐ Includes a 200-question practice exam + results review
- ☐ Earn 10 ASHI CE credits
- ☐ Great for refreshing knowledge and building exam confidence

Survey

Help Shape Future Virtual Classes!

We're planning new virtual education offerings and want your input! Take our quick survey to share the topics and content you'd like to see next. Your feedback helps us create relevant,

CE-approved learning experiences.

[Take the survey now!](#)

Chapter Events

NNEC-ASHI Educational Seminar

When:

Wednesday, June 19, 2025
8:30 am - 4 pm

Where:

245 Hooksett Rd
Manchester, NH 03104

How Much:

NNEC Members – Free
Non-Members - \$150

NOTE: Reservations are required for this event by Wednesday, June 11, 2025

Credits Available:

Up to 7 ASHI CE Credits

How to Register:

[Click here!](#)
or call 781-789-7040

ASHI/CREIA Los Angeles/Ventura County Chapter Presents Advanced Home Inspection Plumbing Program

When:

Sunday June 29, 2025
8am - 4:30pm

Where:

Courtyard Marriot Thousand Oaks
1710 Newbury Park Rd
Thousand Oaks, CA 91320

How Much:

In-Person: \$125
On-line Attendance: \$112

Credits Available:

Up to 8 ASHI CE Credits

How to Register:

[Fill Out This Form!](#)



ASHI | Regency Towers 1415 West 22nd St. Tower Floor | Oak Brook, IL 60523 US

[Unsubscribe](#) | [Update Profile](#) | [Constant Contact Data Notice](#)



Try email marketing for free today!